

TECHNOHULL

SEABORN PERFORMANCE



OMEGA 47
Luxury in Full Power

OMEGA 47
Luxury In Full Power



TECHNOHULL
SEABORN PERFORMANCE

Blending sporty performance with superyacht finish

Omega 47 is TECHNOHULL®'s newest addition to the Omega family, and the brand's new flagship model. Based on the successful hull of the Omega 45, yet wider and longer, it remains a high-performance sport vessel, that seamlessly combines the versatility and performance of a sport rib, with the space, comfort and high-quality details and finishes of a luxury yacht. With a design character, genuinely TECHNOHULL, the Omega 47 offers a perfect match of luxury and power, never seen before in her class.



DESIGN

Staying true to TECHNOHULL®'s distinctive design roots, the OMEGA 47 presents elegant and sleek design lines and proportions, leading the way to a new era in the category, where comfort and space blend uniquely with the sophistication and dynamism of sleek design.

- ≈ Elegant and sleek design
- ≈ Aerodynamic console
- ≈ Deep bulwarks
- ≈ Full walk around deck
- ≈ All around gunwale
- ≈ Two distinct lounging areas
- ≈ Yacht quality cabin



DECK LAYOUTS

outboard



inboard

PERFORMANCE



Minimizing the gap between
absolute comfort and leading performance.

Featuring a Dynastream® hull, the Omega 47 exhibits outstanding performance capabilities. While able to navigate in absolute balance, smoothly and dry, she can effortlessly reach and maintain impressive cruising speeds.

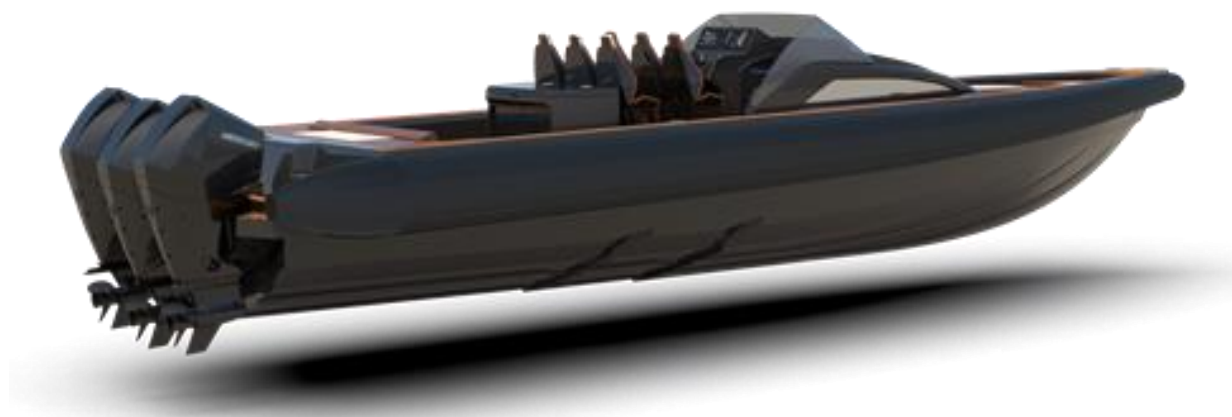
To further enhance performance, OMEGA 47 encompasses an advanced technology, top quality materials and state of the art production techniques, making her one of the best build boats in Europe.

THE HULL

Superb offshore characteristics

Based on the well proven hull of Omega 45, the 47's hull has been modified to absorb the superstructure's increased weight, resulting in superb offshore characteristics. .

Offering a super soft and dry ride, and featuring a low planning speed, the deep V Omega 47 hull is capable for high performance, absolute comfort and control, that one should ride in order to experience its supreme performance.



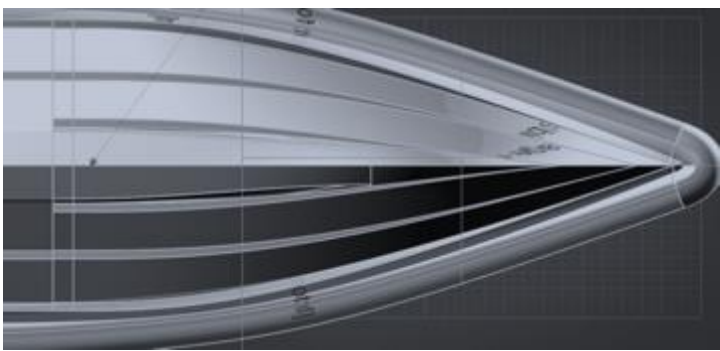
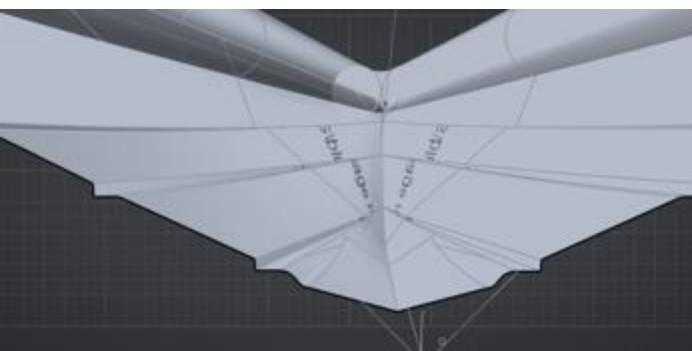
- ≈ Super ventilated twin step design
- ≈ Super sharp waterline entry angles
- ≈ Air entrapment shear strakes
- ≈ Water deflecting angles with variable distribution along vessel's hull length



DYNASTREAM HULL TECHNOLOGY

Every TECHNOHULL is designed from scratch, based on a custom designed hull to best fit its own specific characteristics and operational profile, a competence shared among very few boat manufacturers in the market. The result is the optimum balance for each model between high performance and user friendliness.

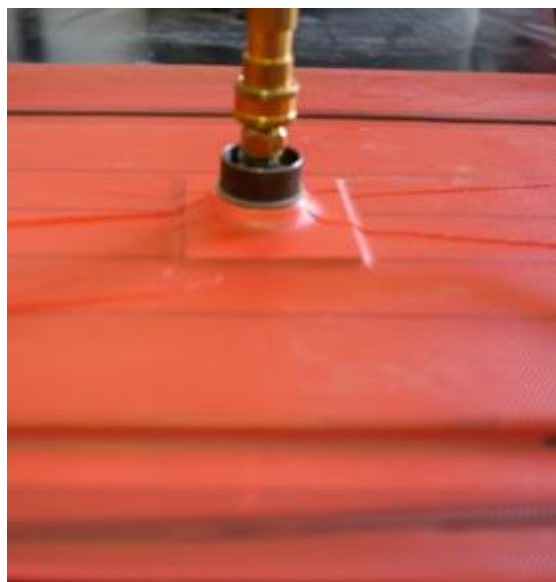
Dynastream hull design technology, which has been developed after extensive research by TECHNOHULL's high expertise team of naval architects, is based on state-of-the-art computer programs and hull structure algorithms, that after evaluating the working envelope of each model, confirm the key hull design aspects. The process continues by matching these key hull design aspects with even more detailed model requirements. Using both analytical formulas and testing from full size and scaled-down models, various hull versions derive. A vast database is constantly populated with results to optimize the design and after several design loops, the hydrodynamic profile is streamlined and strake geometry, step number, step positioning, and the variable dead-rise distribution along the hull's surface are set.



In every TECHNOHULL, the latest technology is employed, and advanced techniques and materials are applied ensuring the highest construction quality and enhancing overall performance.

Top quality gelcoats, multiaxial fibers, vacuum infusion technology and the production of carbon infused parts with post curing processes result in top quality light weight strong and durable hulls.

CONSTRUCTION TECHNOLOGY



COMFORT



A captivating experience
from alpha to omega.

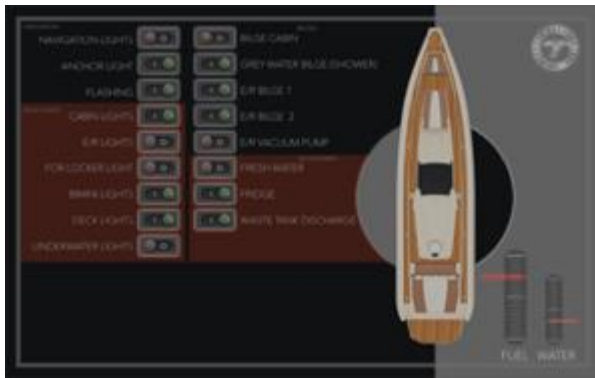
- ≈ Cockpit designed and equipped to offer the ultimate driving experience.
- ≈ Lounging areas with amenities that make life on board a five-star experience.
- ≈ Yacht quality accommodation for two, offering a rare degree of luxury and comfort day and night.



THE HELM STATION

- ≈ Elegant hardtop design with full glass, wipers and side protection
- ≈ Triple helm station arrangement
- ≈ Shock absorbing bucket seats
- ≈ Top class multi display screens
- ≈ Premium quality steering wheel
- ≈ Ergonomic twin level footrest





- ≈ State of the art Digital Switching and Automation
- ≈ In house developed power management software and screen graphics design
- ≈ Digital Control of almost every vessel function through touch screen displays
- ≈ Twin 12" multifunctional displays
- ≈ Intelligent management system control and monitoring.

DIGITAL MANAGEMENT SYSTEM



OMEGA 47
Luxury In Full Power

COMFORT



LOUNGING AREAS





LOUNGING on board

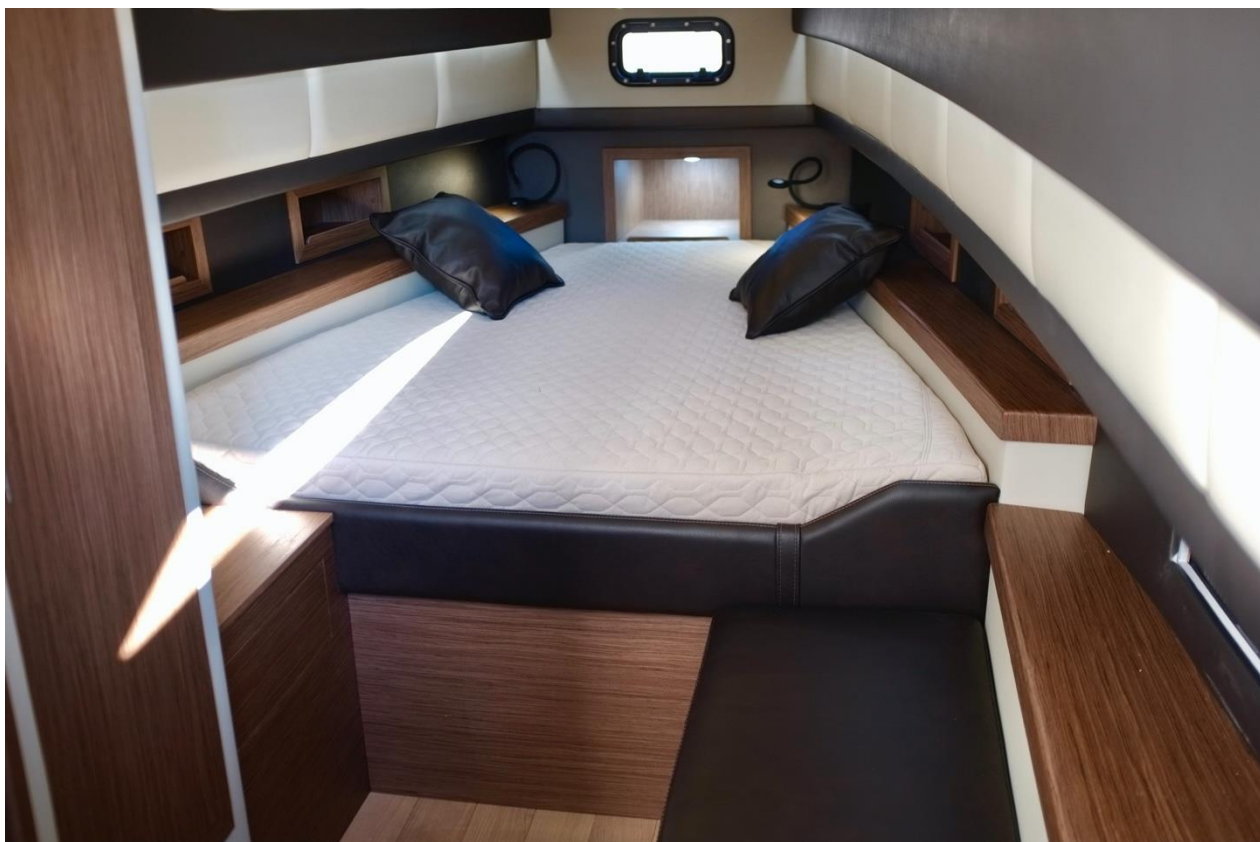
Defining luxury lounging,
with two distinct
lounging areas, for up to
12 people.

- ≈ A large sun pad and a seat forward.
- ≈ A U-shape sofa that can be converted in seconds to a huge sun pad, using the perfectly matched fill in.
- ≈ A fully equipped wet bar with fridge and sink.

DECK FEATURES & AMENITIES



- ≈ Ultra-deep safe, fully walk around deck design
- ≈ All around teak covered gunwale
- ≈ Teak covered deck, bulkheads and table
- ≈ LED lights all around and hardtop down lights
- ≈ Stainless steel retractable cleats
- ≈ Huge weathertight storage area under aft bench
- ≈ Fresh water shower
- ≈ Comfortable swim ladder



THE CABIN Yacht quality accommodation

- ≈ Easy entrance from the cockpit
- ≈ Superyacht finish with quality leather, exotic veneers and premium Corian
- ≈ Oversized double bed with high quality latex mattress
 - ≈ Comfortable couch
- ≈ Full size headroom with shower and storage space
 - ≈ Ample natural light
- ≈ Atmospheric led lighting, offering different lighting options
 - ≈ Front ventilating hatch
- ≈ Wardrobe, wood storage cabinetry and ample storage space under bed and sofa





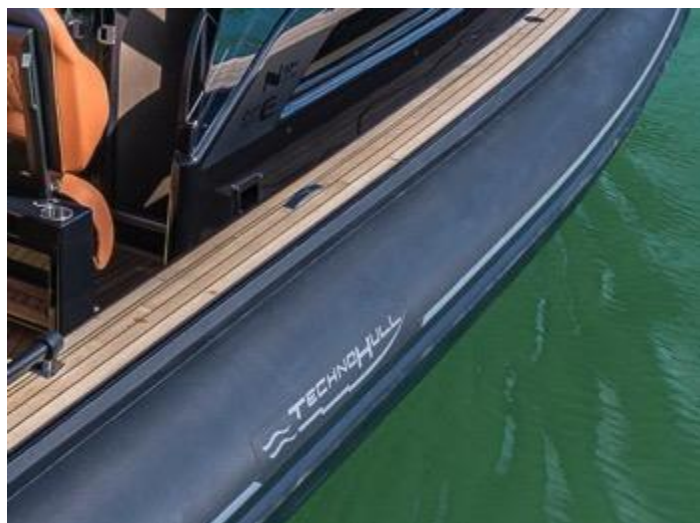
THE CABIN



A SENSE OF LUXURY

Choosing the finest materials, teaming up with the leading suppliers of the marine industry and employing craftsmanship of the highest standards, is what endows the Omega 47 with an unparalleled sense of luxury and comfort.





TUBES

7 separate chamber
ORCA dtex 1670 Hypalon,
with overpressure release
valves

UPHOLSTERY

Exterior and interior
upholstered by the
highest quality Spradling
fabrics with a variety of
color choices and unique
stitching patterns.

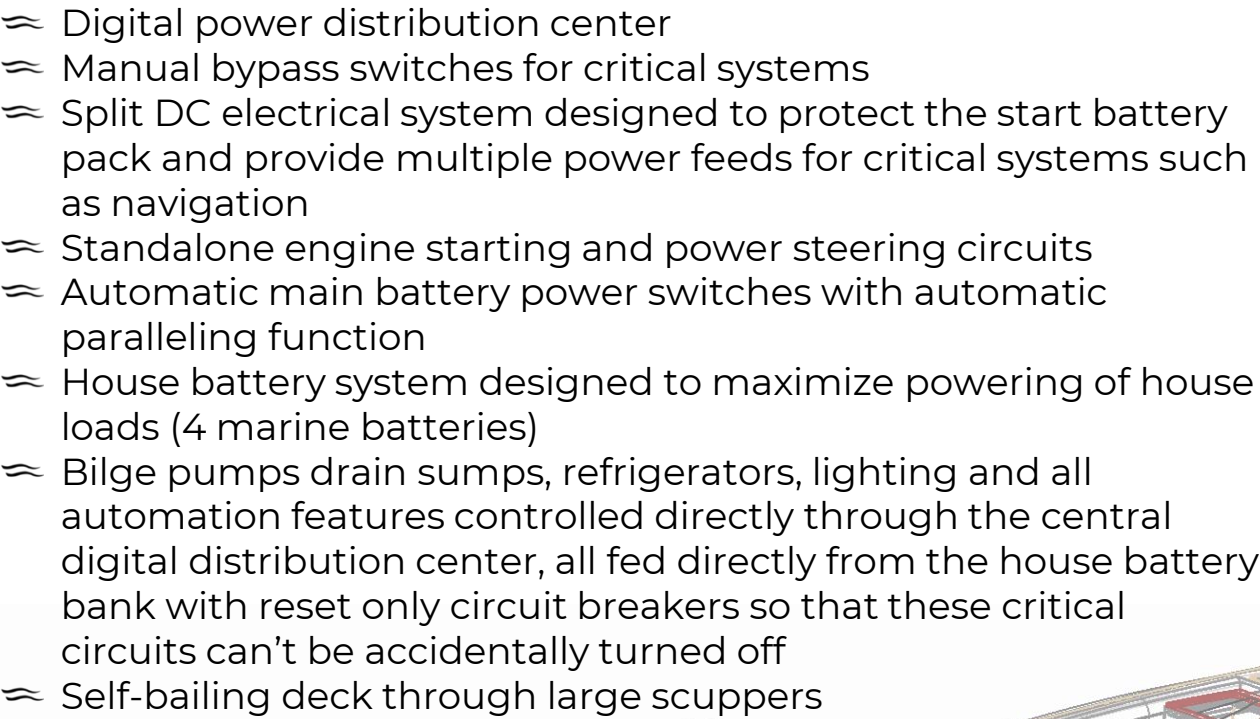


WOODWORK

Top quality solid teak
flooring for
the deck, gunwales,
tables, stairways

Sophisticated, state of the art engineering

- ≈ Digital power distribution center
- ≈ Manual bypass switches for critical systems
- ≈ Split DC electrical system designed to protect the start battery pack and provide multiple power feeds for critical systems such as navigation
- ≈ Standalone engine starting and power steering circuits
- ≈ Automatic main battery power switches with automatic paralleling function
- ≈ House battery system designed to maximize powering of house loads (4 marine batteries)
- ≈ Bilge pumps drain sumps, refrigerators, lighting and all automation features controlled directly through the central digital distribution center, all fed directly from the house battery bank with reset only circuit breakers so that these critical circuits can't be accidentally turned off
- ≈ Self-bailing deck through large scuppers





General Characteristics

Length Overall	13,8m (14,05m Inboard)
Beam	3,6m
Hull	Deep V with ventilated steps
Hull Draft	69cm
Light Ship Weight	Approx. 6.500kg
Fuel Capacity	1.200L
Water Capacity	180L
Berths	2
Max Engines	4x450HP
Engine Options	Outboard/Inboard
Number Of Passengers	12
Design Category	B-Offshore

OMEGA 47

Luxury In Full Power

OUTBOARD GASOLINE

4 x Mercury 450 V8
3 x Mercury Verado 450 V8
3 x Mercury Verado 400 L6
3 x Mercury Verado 600 V12
2 x Mercury Verado 600 V12



PROPULSION OPTIONS



INBOARD DIESEL

2 x Volvo D6 440 A / DPI
2 x Cummins 550hp surface drives

Standard Equipment

navigation & instruments

GPS Raymarine Axiom PRO 12" with map and sounder
Touchscreen Smart Central Control Digital Management
VHF Raymarine and Antenna

deck & cockpit

3 X Shock Absorbing Helm Seats
Fresh Water Shower
Comfortable Swim Ladder
Exterior upholstered by highest quality fabrics
Top quality solid teak flooring for deck, gunwales and table
Premium quality steering wheel
Tubes Orca 1670

cabin

Large size cabin bed
Electric Toilet with Holding Tank / Washbasin and Shower
Interior upholstered by highest quality fabrics
Hot water available in cabin and on deck

electric equipment

Remote (helm) operated motorized main power switching
Marine batteries Auto Charging System
Led Special Lights
Automatic Bilge Pump
Electric Hatch Opening
Shore power and charger
Electric Installation

mooring and docking

Electric Windlass with Remote Control Chain Counter
Stainless steel ULTRA anchor with 40m stainless steel chain
Large size retractable stainless-steel cleats
Fenders and ropes

accessories

Electric air pump
Sunbed extension

Optional Equipment

navigation & instruments

Additional Raymarine Axiom PRO 12"
Upgrade from Axiom 12" to Axiom 16"
Fusion Apollo series, Mp3, Subwoofer,
Speakers, Amplifiers
Fusion Marine Audio/Mp3/iPod/iPhone
4 Speakers

Thermal Night Vision camera M200
Radar Raymarine Quantum Series
Extra Smart Craft Vessel view 7"

deck & cockpit

Carbon T-Top
with fixed glass windscreen and wiper

Second row of seats (reclining bolsters
with shock absorber, total 6 helm seats)

Electric aft table
Removable Teak Table with carbon pole
Wet bar including fridge and sink
Sun tents with Poles

electric equipment

Electric fridge / freezer
Underwater Lights
Shore power + charger
Bow Thruster

accessories


Bow towing eyes
Antifouling Racing Paint
Trailer
Parking Cover
Console Cover
Sun Deck & Seats Cover
Towing set of ropes

*

OMEGA 47

Luxury in Full Power



 **TECHNOHULL**

1st km Lavriou-Souniou Ave.
Lavrion, 19500, GR
tel +30 2292 026719
technohull.com